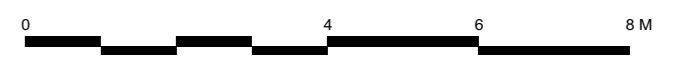
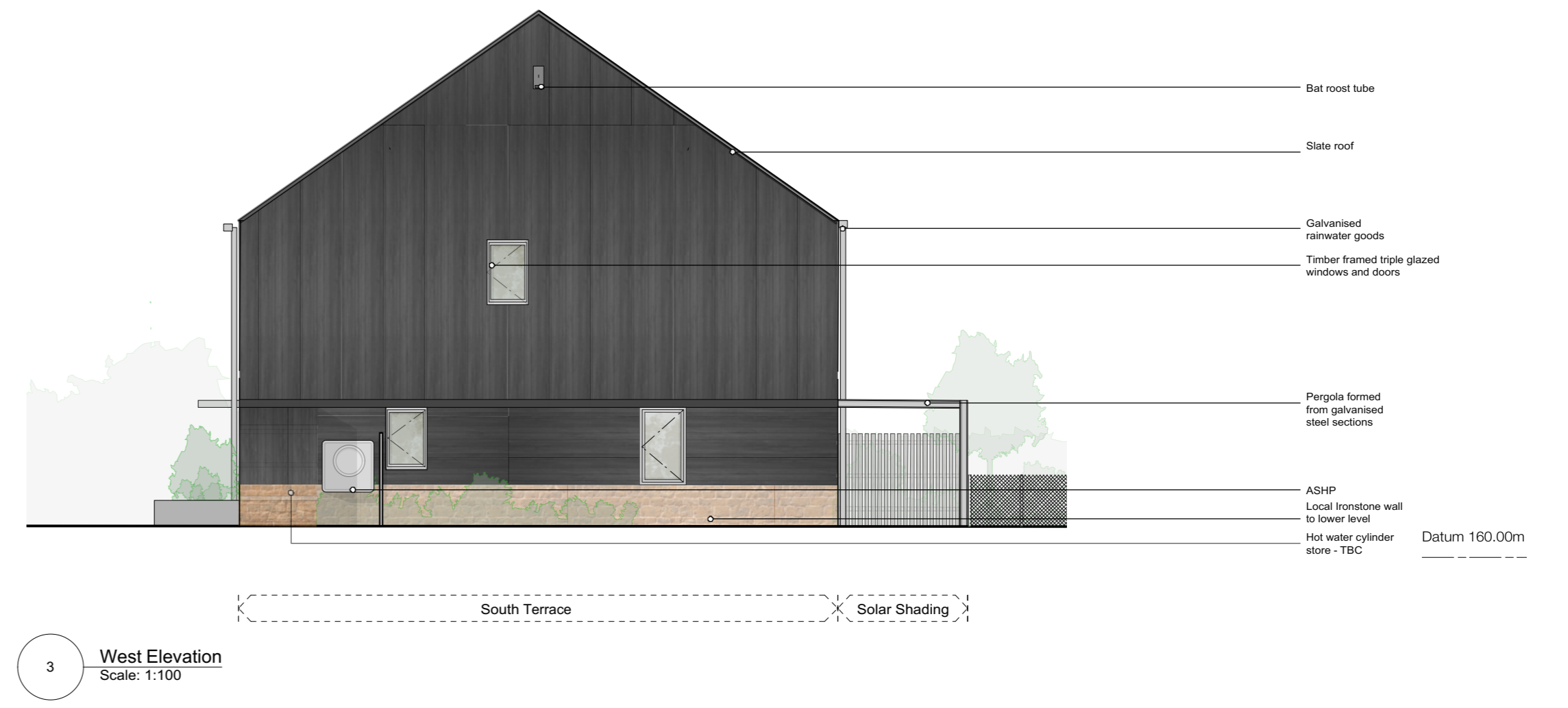


Note:
 All levels and dimensions to be site surveyed and confirmed by the contractor. See also architectural details, mechanical and electrical layout and structural engineers drawings and specifications. Door and window manufacturer to produce shop drawings for comment before manufacture.
 All details are insert only, to be finalised by the contractor. Drawings subject to statutory approvals.



| | | | | |
|---------------------------------------|---|--------------------------------|----------------------------------|------------------------|
| Project Hook Norton Housing | DWG No 220_05_301 | P1 300129 Issued for Planning | P5 270522 Issued for Information | P9 240622 Client Issue |
| | Title Proposed Elevations - South Terrace | P2 260221 Issued for valuation | P6 070622 Issued for Information | |
| | Scale 1:100@A1 | P3 300321 Issued for valuation | P7 100622 Issued for Information | |
| | | P4 230522 Consultant issue | P8 170622 Planning Issue | |

Charlie Luxton Design
 Black Barn Studios, Swerford Road, Hook Norton, Oxon, OX15 5JR
 info@charieluxton.com
 01608 730086
Do not scale off this drawing. This drawing is to be read with all other contract documents. Any discrepancies are to be reported to the architect. At construction status, this drawing remains design intent only. All information to be checked by contractor for site accuracy and fit. Drawings are subject to statutory approvals and site surveys.