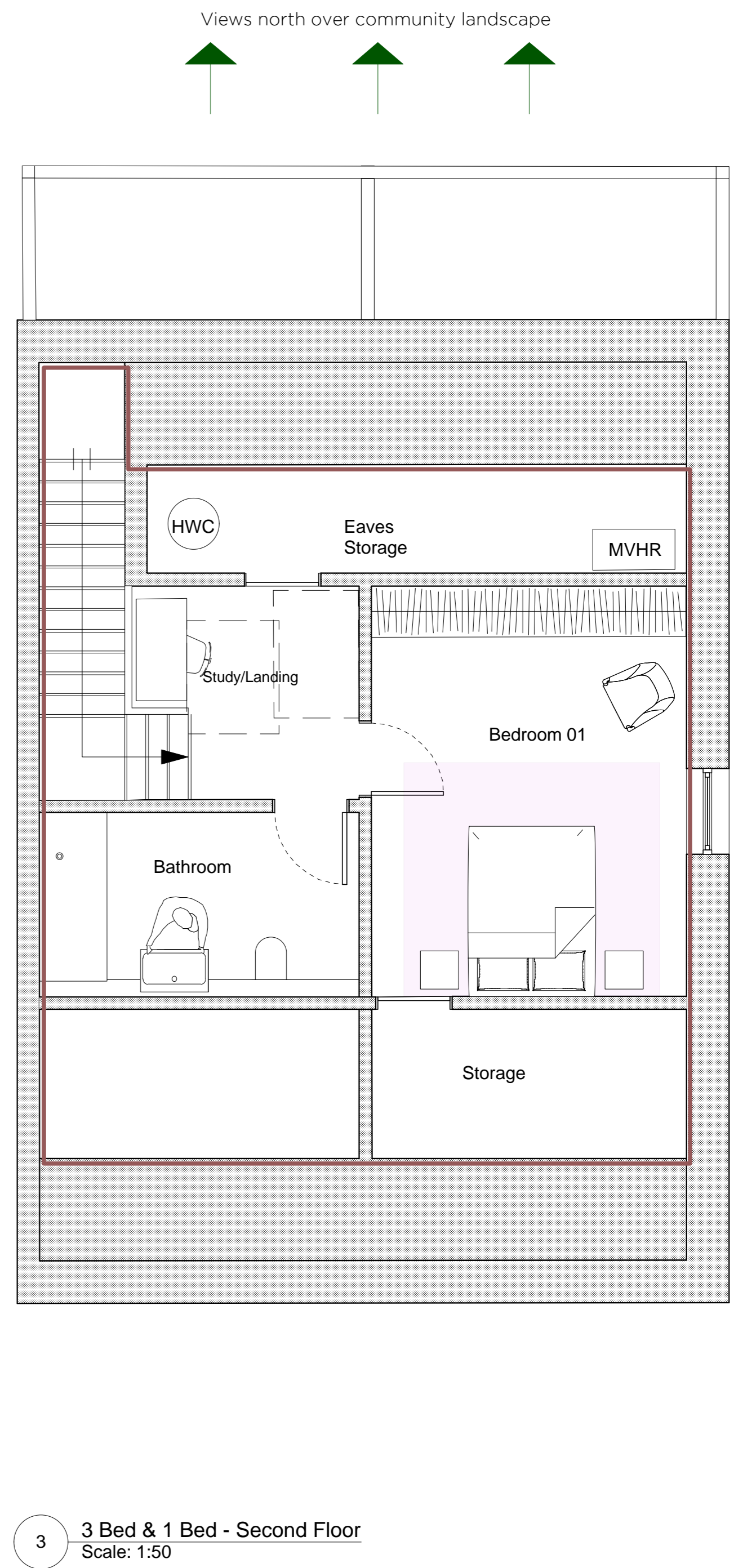
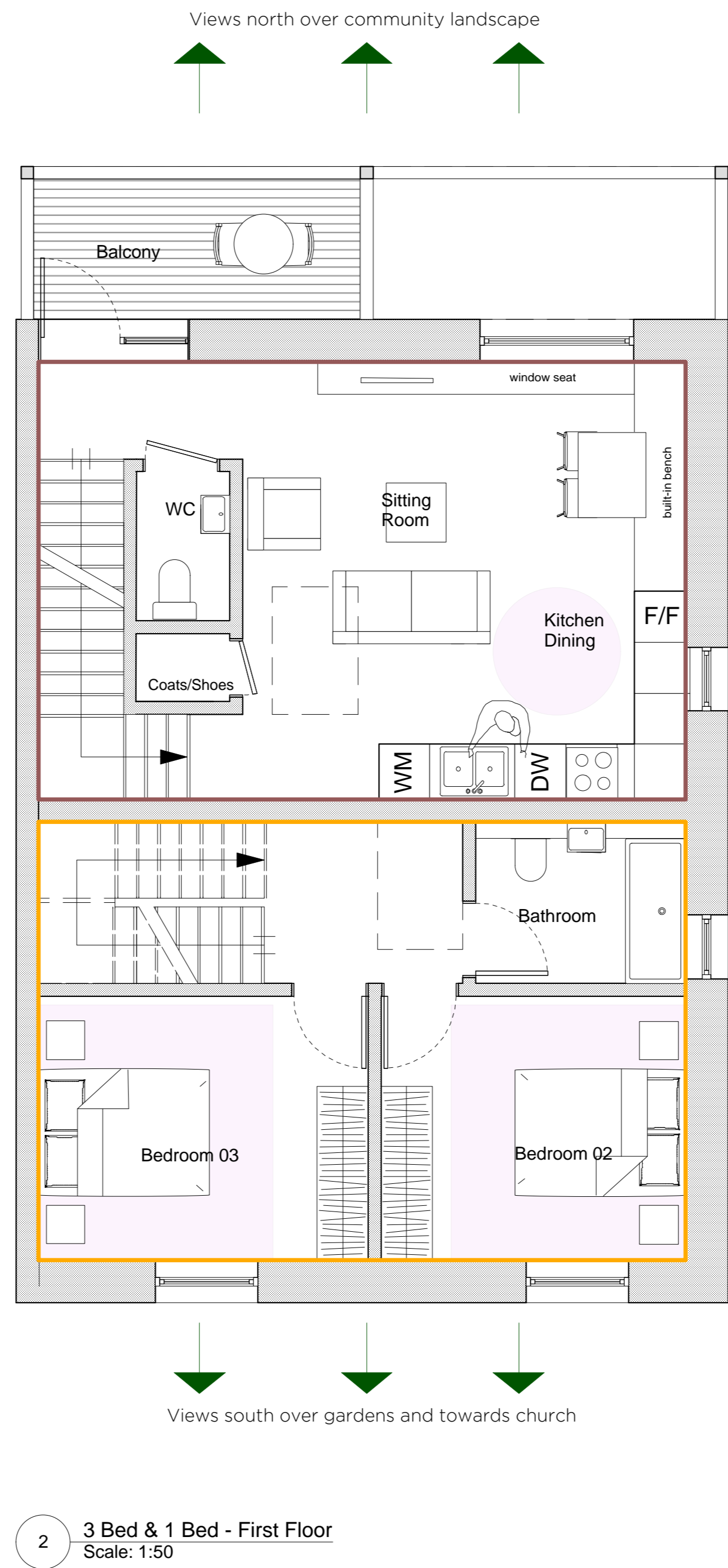
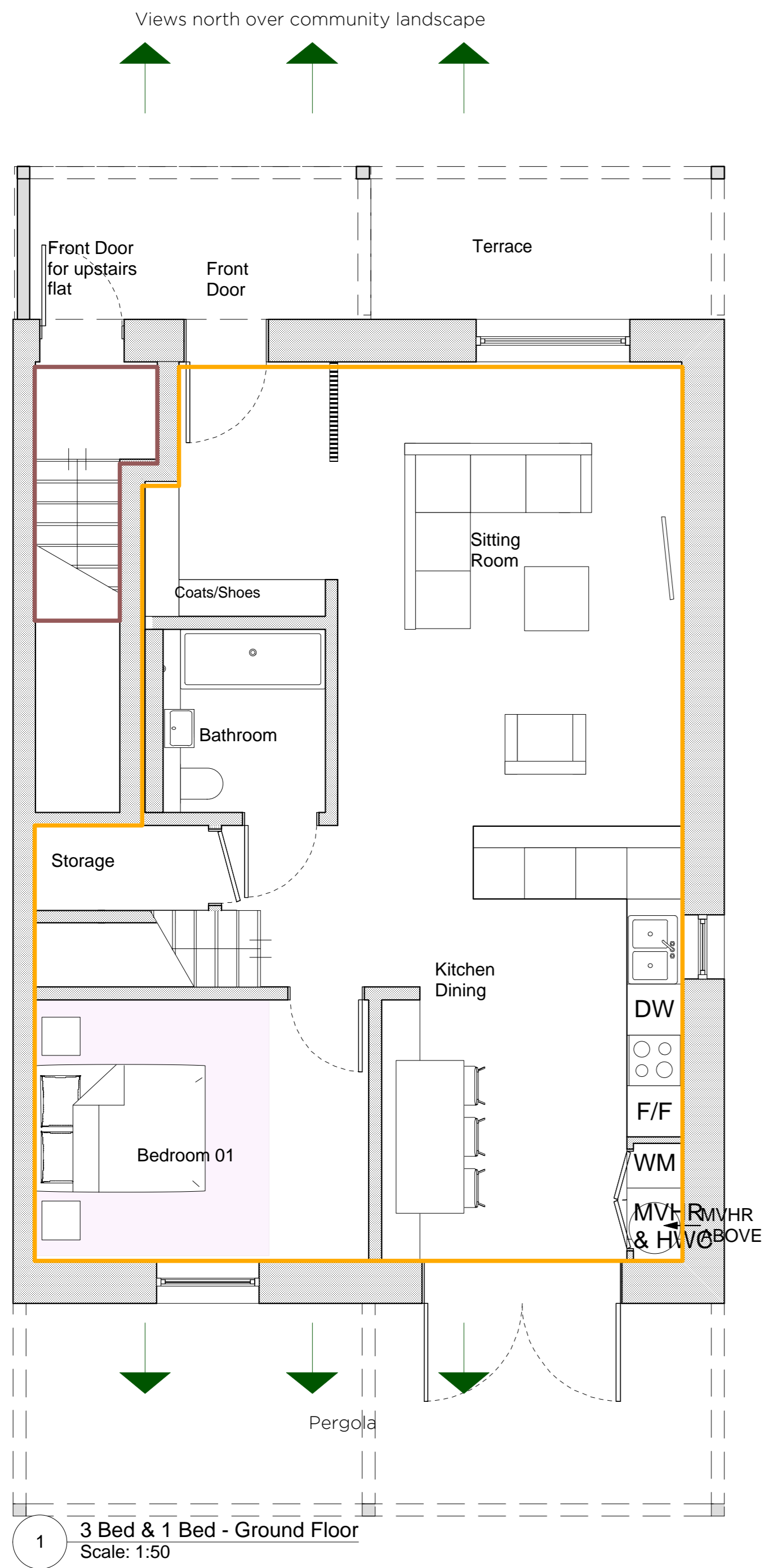
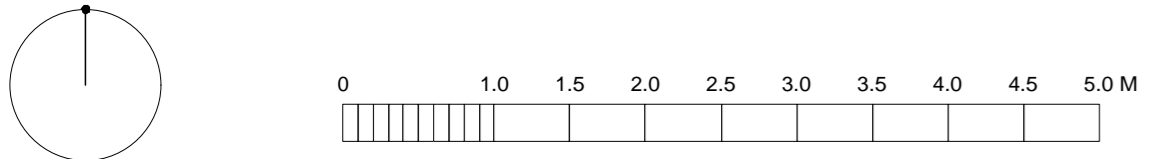


South Terrace - 3 Bed & 1 Bed

Note:
 All levels and dimensions to be site surveyed and confirmed by the contractor. See also architectural details, mechanical and electrical interst layout and structural engineers drawings and specifications. Door and windows manufacturer to produce shop drawings for comment before manufacture. All details are intent only, to be finalised by the contractor. Drawings subject to statutory approvals.



- 1 Bed Maisonette - First and Second Floor - Approximately 84m²
- 3 Bed Maisonette - Ground and First Floor - Approximately 112sqm



project Hook Norton Housing	dwg no 220_03_311	P1 090120 Issued for lifetime homes assessment	P5 290120 Planning Issue	Charlie Luxton Design Beanacre Cottage, Ropeway, Hook Norton, Oxon, OX15 5GB info@charieluxton.com 01608 730086
title Proposed Flat Layout (3 bed & 1 bed)	P2 140120 Board Sign-off			Do not scale off this drawing. This drawing is to be read with all other contract documents. Any discrepancies are to be reported to the Architect. At construction status, this drawing remains design intent only. All information to be checked by contractor for site accuracy and fit. Drawings are subject to statutory approvals and site surveys.
scale 1:50@ A1	P3 220120 Window Updates			
	P4 240120 Design Team Issue			